

Guardian VR-Series

Material Pumps

PARTS LIST

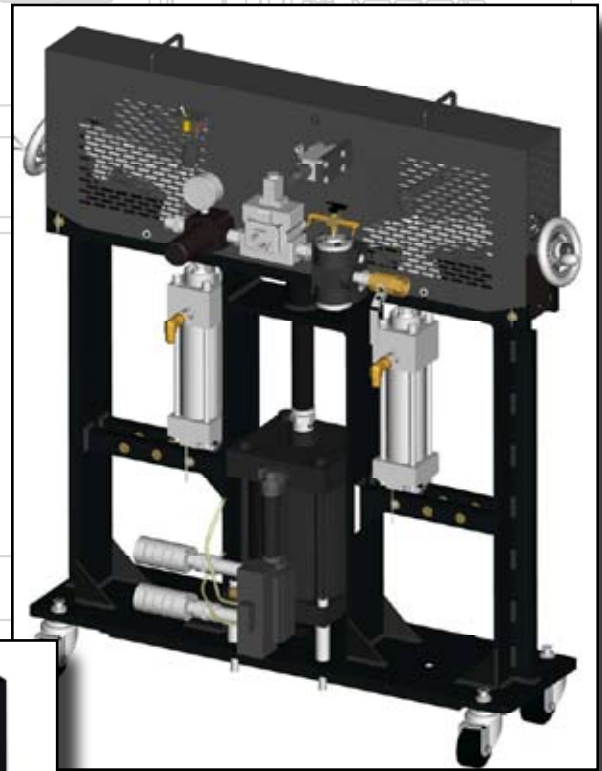


Table Of Contents

Section 1 General Information

1:0 Technical Information	1
1:1 Assembly Drawings	5
1:2 Sub Assembly Drawings	16
1:3 Maintenance	29

Section 2 Technical & Warranty Information

2:1 Notes	30
2:2 Limited Warranty Policy	32
2:3 Technical Assistance	33
For Your Reference	INSIDE BACK COVER

N/A = Non Applicable

Section 1 - General Information: Technical Information

VR Material Pump Technical Information

Sec. 1:0

	A5-6000 VR	A5-12000 VR	A7-6000 VR	A7-12000 VR
Fluid Sections	1.0 (18175-01) 1.5 (19975-01) 2.0 (19950-01)		1 (22350-00) 2 (22370-00) 3 (20366-01)	
Pneumatic Motor	5in.	5in.	7in.	7in.
Maximum / Minimum Fluid Section Displacement	1.0 1.5 See #23860-5XX 2.0		(21270-00) (22102-00) See #23860-7XX (20366-00)	
Maximum Pump Stroke Length	3.1in. / 7.9 cm		5.36in. / 13.6 cm	5.36in. / 13.6 cm
Minimum Pump Stroke Length	1.21in. / 3. cm		2.12in. / 5.4 cm	2.12in. / 5.4 cm
Air Requirement at maximum output	30 cycle min. = 20 cfm/60 cycle min. = 41 cfm @ 100 psi		30 cycle min. = 71 cfm/60 cycle min. = 143 cfm @ 100 psi	
Summary Sheet				
23860-7XX	Output		PSI	Ratio Range
21000-7XX	GPC	CC's PC		
711	0.084	318.662	2500	1:1 - 2.53:1
712	0.070	267.000	3000	.59:1 - 3.69:1
713	0.090	370.000	2000	.53:1 - 3.31:1
722	0.057	215.720	3200	1:1 - 2.53:1
723	0.080	319.000	2500	.78:1 - 4.88:1
733	0.111	421.603	1850	1:1 - 2.53:1
23860-5XX	Output		PSI	Ratio Range
20290-5XX	GPC	CC's PC		
511	0.033	125	3200	1:1 - 2.6:1
512	0.024	93.75	3200	2:1 - 5.2:1
513	0.021	83.3	3200	3:1 - 7.8:1

Section 1 - General Information: Technical Information

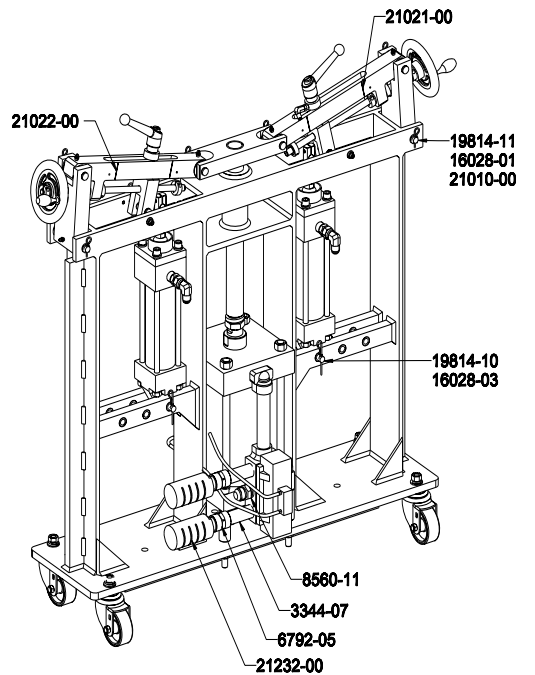
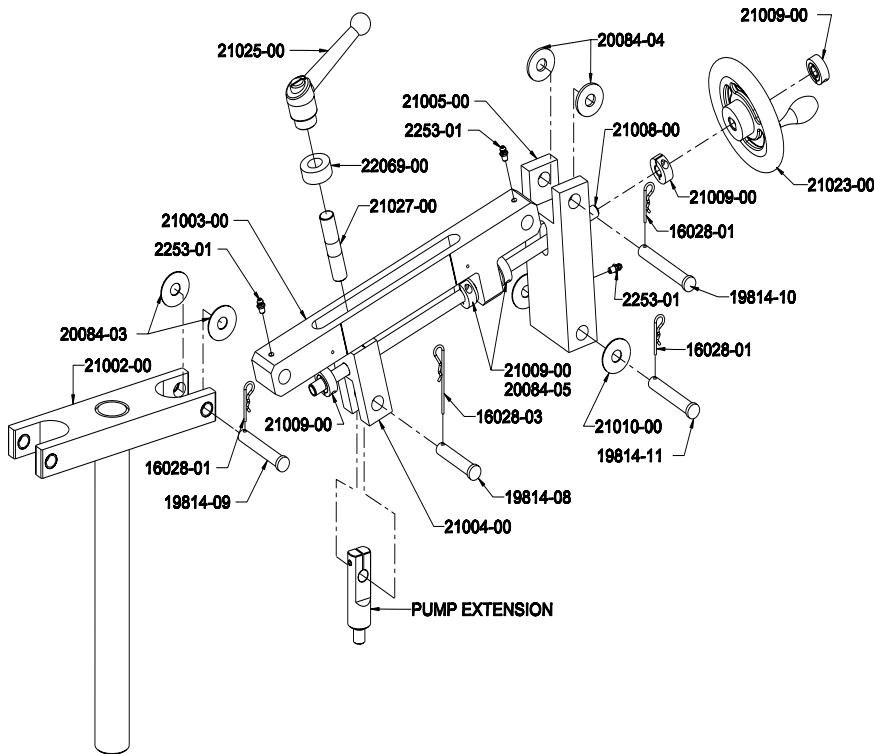
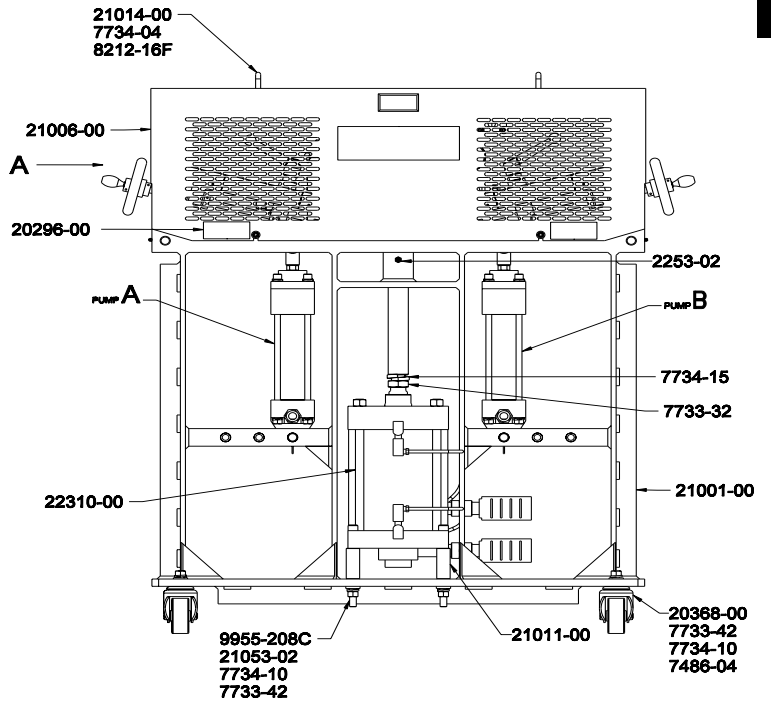
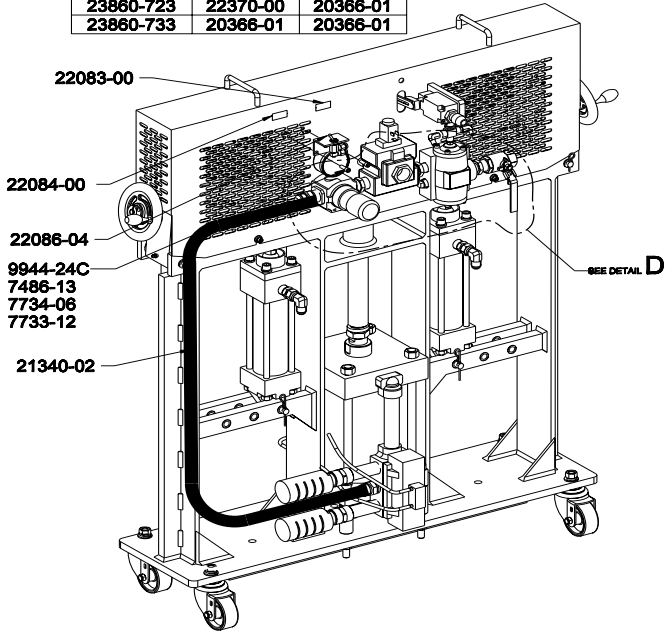
VR Material Pump Technical Information

(XXXXX-713) 2:1 & 1.5:1													
	GPC	CCPC											
Max Output:	0.09	370											
TYP PSI:	1260												
	20366-01												
21250-00	B-Side												
A-Side	1	0.95	0.9	0.85	0.8	0.75	0.7	0.66	0.6	0.55	0.5	0.45	0.4
1	0.756	0.796	0.840	0.889	0.945	1.008	1.072	1.145	1.260	1.374	1.512	1.680	1.890
0.95	0.718	0.756	0.798	0.845	0.898	0.957	1.019	1.088	1.197	1.306	1.436	1.596	1.796
0.9	0.680	0.716	0.756	0.800	0.850	0.907	0.965	1.031	1.134	1.237	1.361	1.512	1.701
0.85	0.642	0.676	0.714	0.756	0.803	0.857	0.911	0.973	1.071	1.168	1.285	1.428	1.607
0.8	0.605	0.636	0.672	0.711	0.756	0.806	0.858	0.916	1.008	1.100	1.210	1.344	1.512
0.75	0.567	0.597	0.630	0.667	0.709	0.756	0.804	0.859	0.945	1.031	1.134	1.260	1.417
0.7	0.533	0.561	0.592	0.627	0.666	0.711	0.756	0.807	0.888	0.969	1.066	1.184	1.332
0.66	0.499	0.525	0.554	0.587	0.624	0.665	0.708	0.756	0.832	0.907	0.998	1.109	1.247
0.6	0.453	0.477	0.504	0.533	0.567	0.605	0.643	0.687	0.756	0.825	0.907	1.008	1.134
0.55	0.416	0.438	0.462	0.489	0.520	0.554	0.590	0.630	0.693	0.756	0.831	0.924	1.039
0.5	0.378	0.398	0.420	0.445	0.472	0.504	0.536	0.572	0.630	0.687	0.756	0.840	0.945
0.45	0.340	0.358	0.378	0.400	0.425	0.453	0.482	0.515	0.567	0.618	0.680	0.756	0.850
0.4	0.302	0.318	0.336	0.356	0.378	0.403	0.429	0.458	0.504	0.550	0.605	0.672	0.756
21250-00	4.861	4.618	4.374	4.131	3.888	3.645	3.427	3.208	2.916	2.673	2.430	2.187	1.944
20366-01	6.431	6.109	5.788	5.466	5.144	4.823	4.534	4.244	3.858	3.536	3.215	2.893	2.572

Section 1 - General Information: Assembly Drawings

23860-7XX Big VR Material Pump Assembly

GLASCRAFT P/N	PUMP A	PUMP B
23860-711	22350-00	22350-00
23860-712	22350-00	22370-00
23860-713	22350-00	20366-01
23860-722	22370-00	22370-00
23860-723	22370-00	20366-01
23860-733	20366-01	20366-01

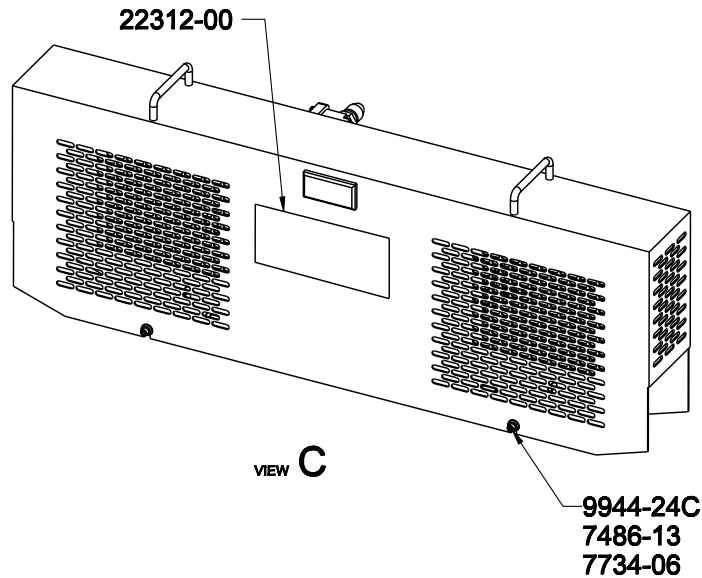
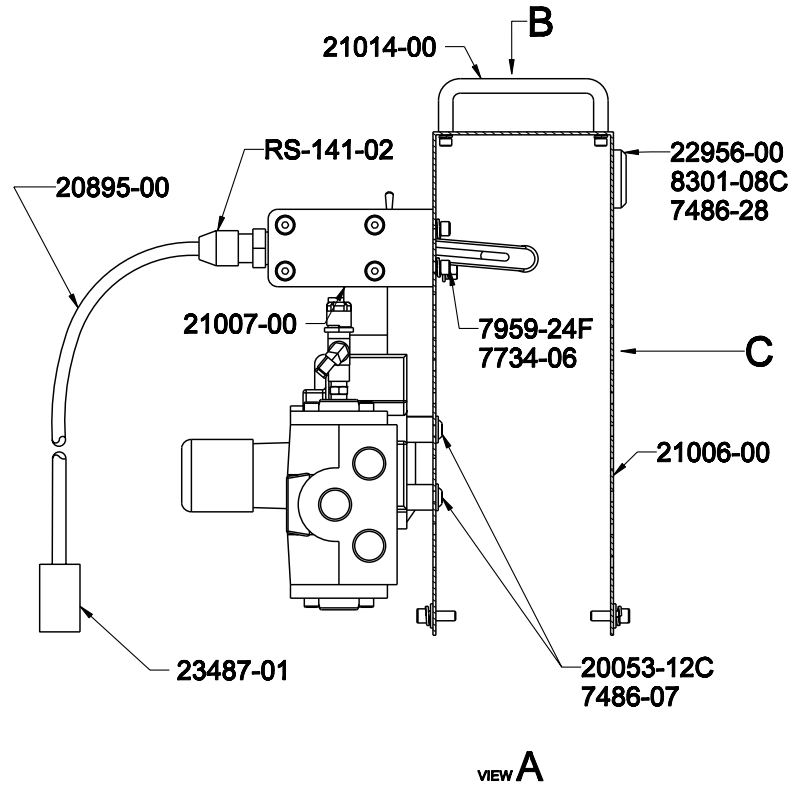
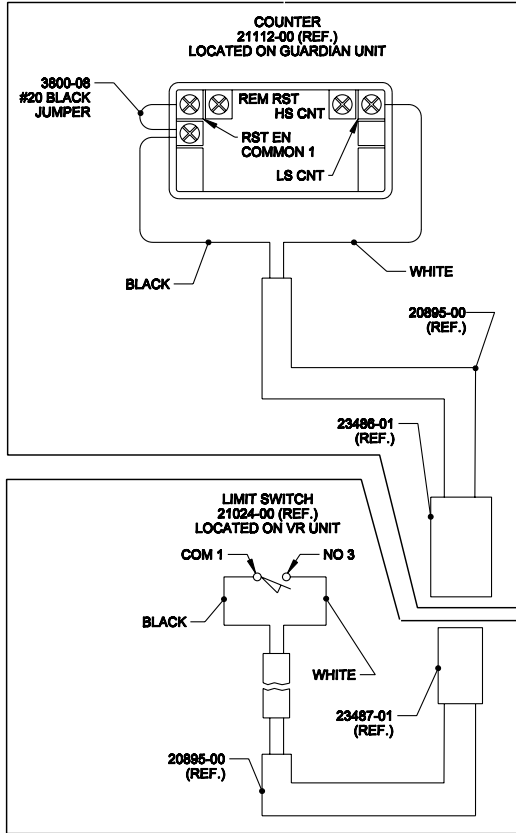


Sec. 1:1

Section 1 - General Information: Assembly Drawings

Sec. 1:1

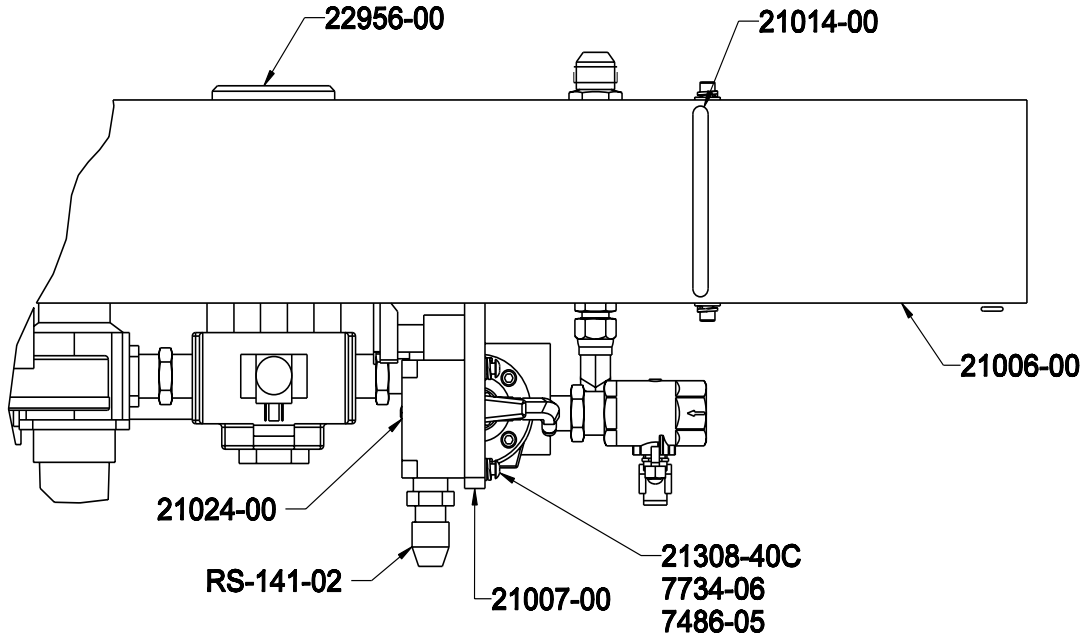
23860-7XX Big VR Material Pump Assembly



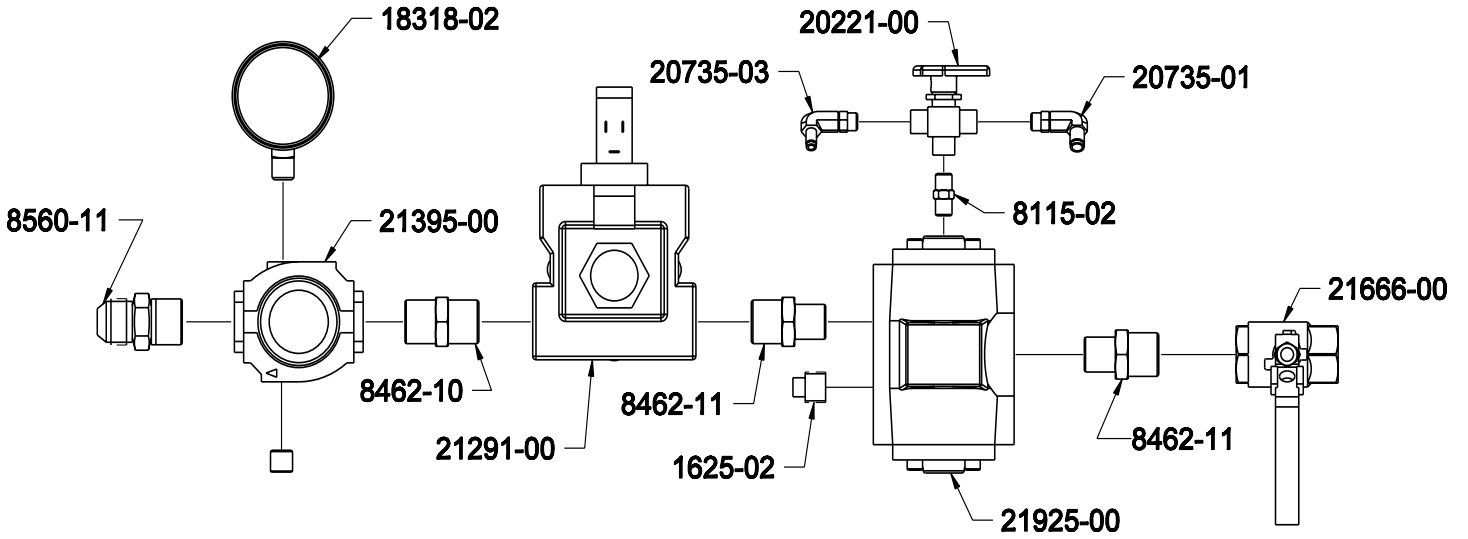
Section 1 - General Information: Assembly Drawings

23860-7XX Big VR Material Pump Assembly

Sec. 1:1



VIEW B

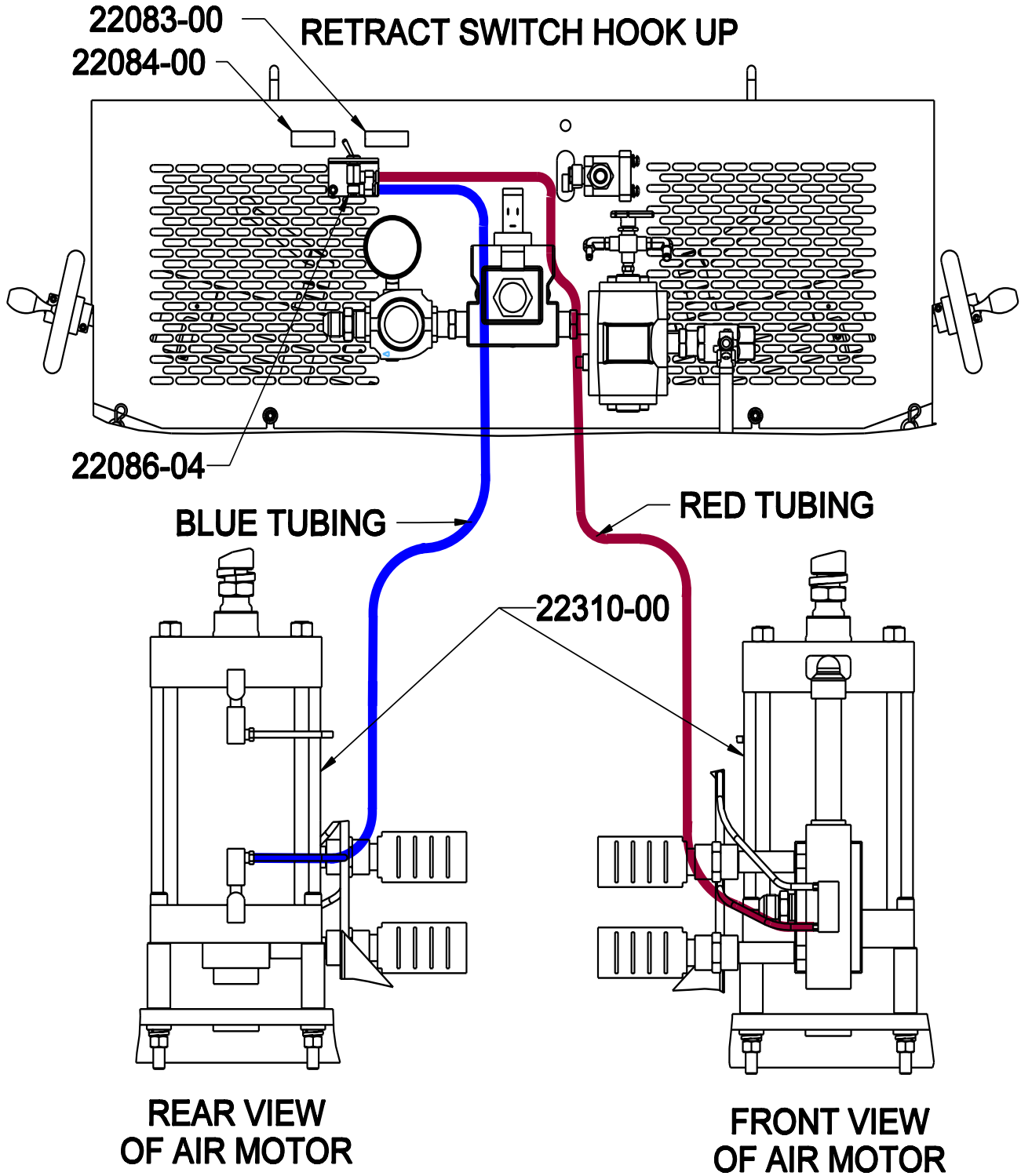


DETAIL D

Section 1 - General Information: Assembly Drawings

23860-7XX Big VR Material Pump Assembly

Sec. 1:1



Section 1 - General Information: Assembly Drawings

23860-7XX Big VR Material Pump Assembly

Sec. 1:1

Part Number	Description	Qty.
16028-01	HITCH PIN	6
16028-03	HITCH PIN	4
1625-02	PIPE PLUG	1
18318-02	AIR GAUGE	1
19814-08	CLEVIS PIN	2
19814-09	CLEVIS PIN	2
19814-10	CLEVIS PIN	4
19814-11	CLEVIS PIN	2
20053-12C	SCREW	3
20084-03	WASHER	4
20084-04	WASHER	4
20084-05	WASHER	4
20221-00	BALL VALVE	1
20296-00	PINCH POINT DECAL	4
20368-00	SWIVEL CASTER	4
20735-01	ELBOW FITTING	1
20735-03	ELBOW FITTING	1
20735-03	ELBOW FITTING	1
20895-00	CABLE	6
21001-00	V.R. FRAME	1
21002-00	YOKE & GUIDE ROD	1
21003-00	DRIVE LINK	2
21004-00	PUMP ADAPTER	2
21005-00	PIVOT BRACKET	2
21006-00	LINKAGE GUARD	1
21007-00	MOUNTING BRACKET	1
21008-00	ADJUSTMENT SCREW	2
21009-00	SHAFT COLLAR	10
21010-00	NYLON WASHER	4
21011-00	STANDOFF	4
21014-00	ROUND HANDLE	2
21021-00	RIGHT CALIBRATION DECAL	2
21022-00	LEFT CALIBRATION DECAL	2
21023-00	HAND WHEEL	2
21024-00	LIMIT SWITCH	1
21025-00	HANDLE	2
21027-00	STUD	2
21053-02	WASHER	4
21232-00	EXHAUST SILENCER	2
21291-00	POPPET VALVE	1
21308-40C	SCREW	4
21340-02	AIR HOSE	1

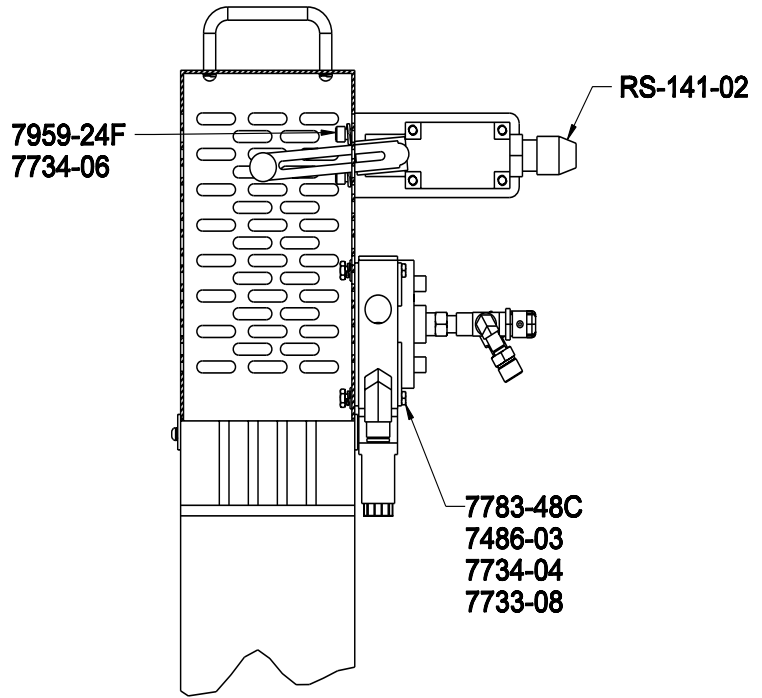
Part Number	Description	Qty.
21395-00	REGULATOR	1
21666-00	BALL VALVE	1
21925-00	PILOT VALVE	1
22069-00	SPACER	2
22086-04	RETRACT SWITCH KIT	1
22310-00	AIR MOTOR	1
22312-00	VARIABLE RATIO DECAL	1
2253-01	LUBE FITTING	6
2253-02	LUBE FITTING	1
22956-00	HOLE COVER	1
23487-01	ELECTRICAL PLUG	1
23862-00	CONNECTION KIT	1
3344-07	FITTING	2
3800-08	COPPER WIRE	
6792-05	COUPLE FITTING	2
7486-04	WASHER	4
7486-05	FENDER WASHER	4
7486-07	WASHER	3
7486-13	WASHER	4
7486-28	WASHER	2
7733-32	HEX NUT	1
7733-42	HEX NUT	8
7734-04	LOCK WASHER	4
7734-06	LOCK WASHER	10
7734-10	LOCK WASHER	8
7734-15	LOCK WASHER	1
7959-24F	SCREW	2
8115-02	FITTING	1
8212-16F	SCREW	4
8301-08C	SCREW	2
8462-10	FITTING	1
8462-11	FITTING	2
8560-11	FITTING	2
9944-24C	SCREW	4
9955-208C	SCREW	4
RS-141-02	CORD GRIP	1

Section 1 - General Information: Assembly Drawings

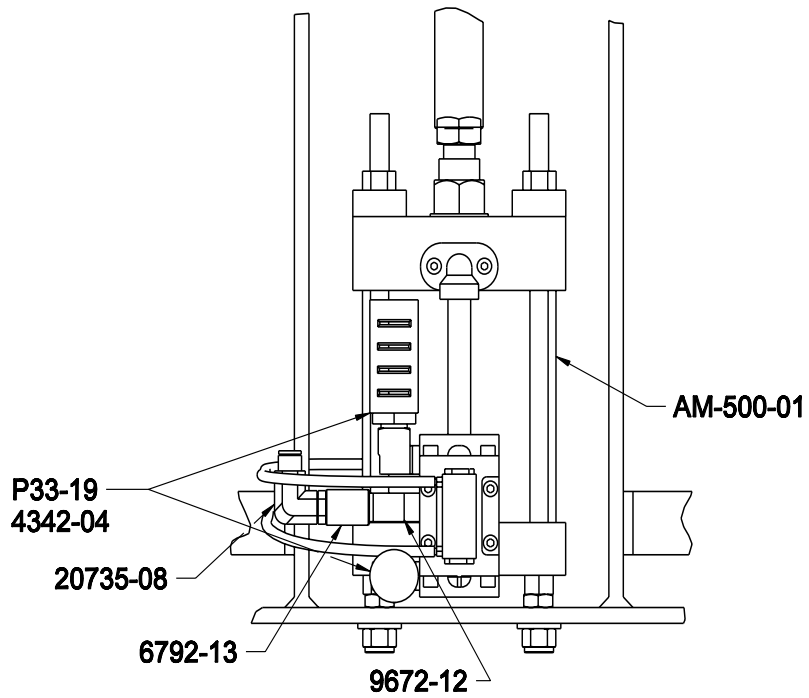
Sec. 1:1

23860-5XX Small VR Material Pump Assembly

GLAS-CRAFT P/N	PUMPING SECTION	
	PUMP A	PUMP B
23860-511	18175-01	18175-01
23860-512	18175-01	19975-01
23860-513	18175-01	19950-01



SECTION **D-D**

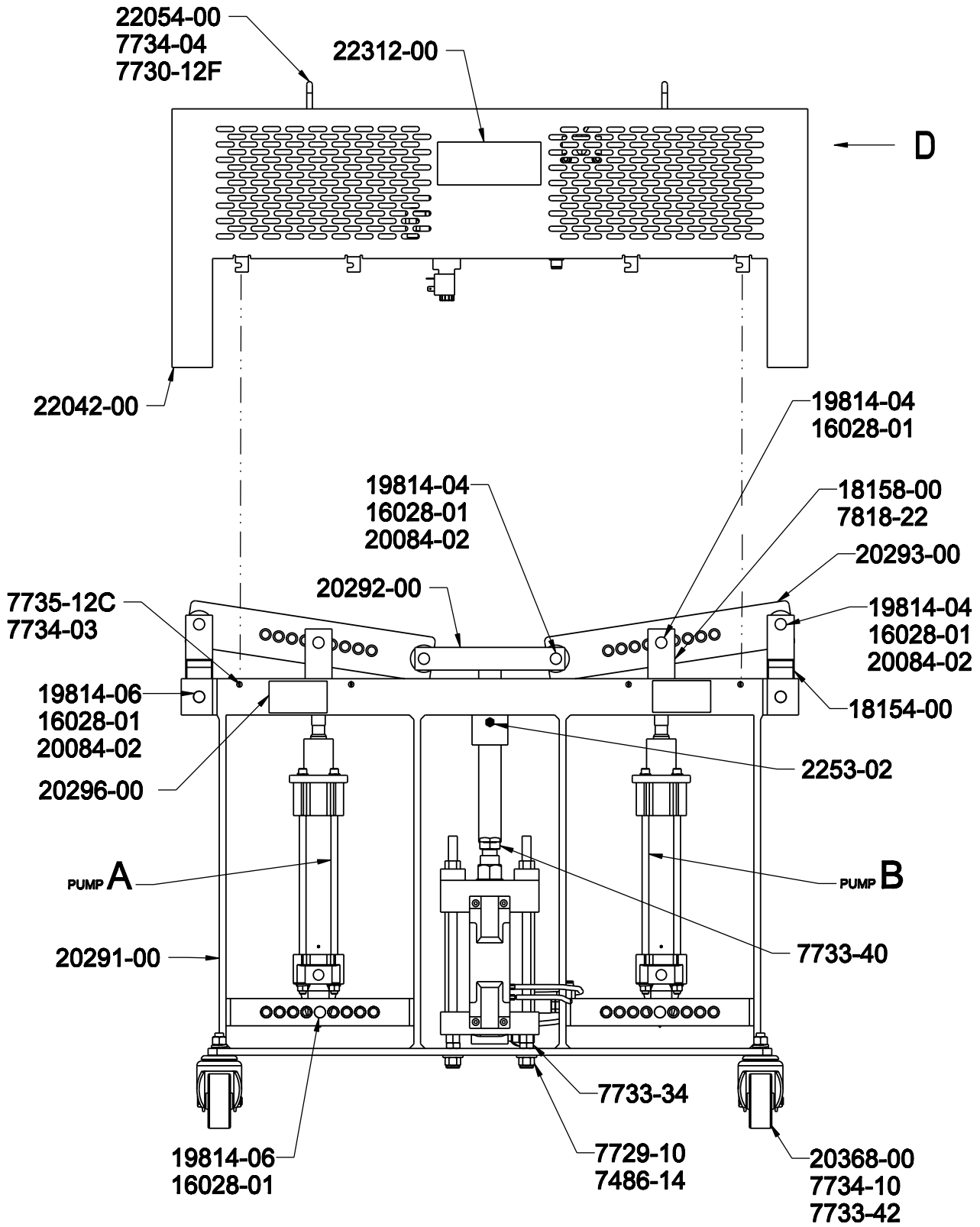


REAR VIEW AM-500-01

Section 1 - General Information: Assembly Drawings

23860-5XX Small VR Material Pump Assembly

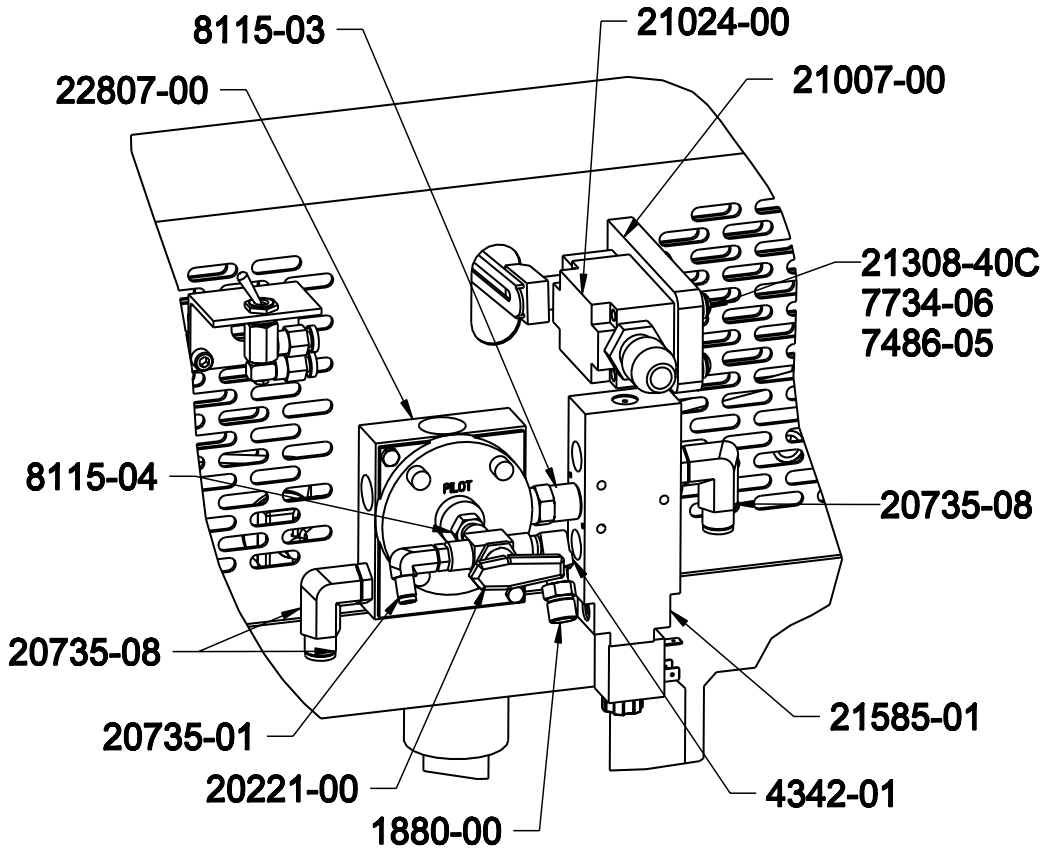
Sec. 1:1



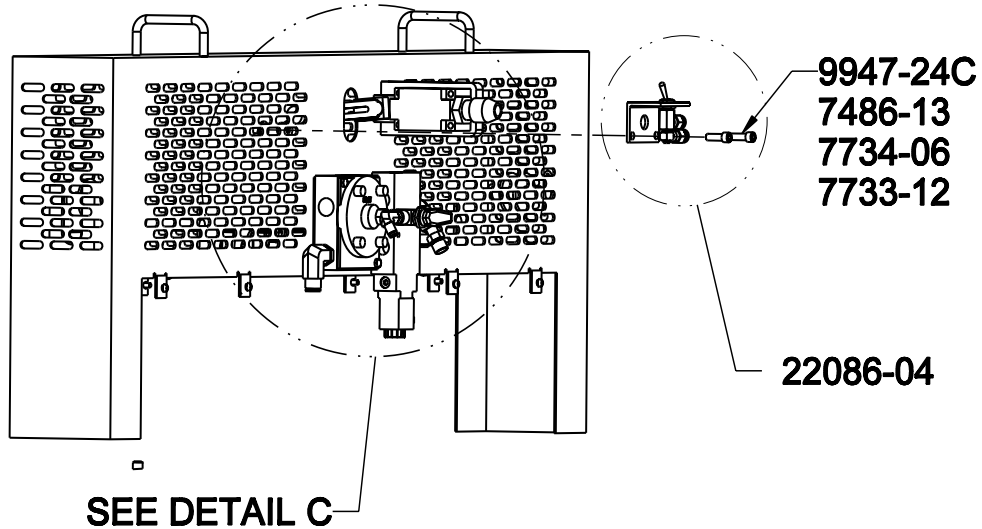
Section 1 - General Information: Assembly Drawings

Sec. 1:1

23860-5XX Small VR Material Pump Assembly



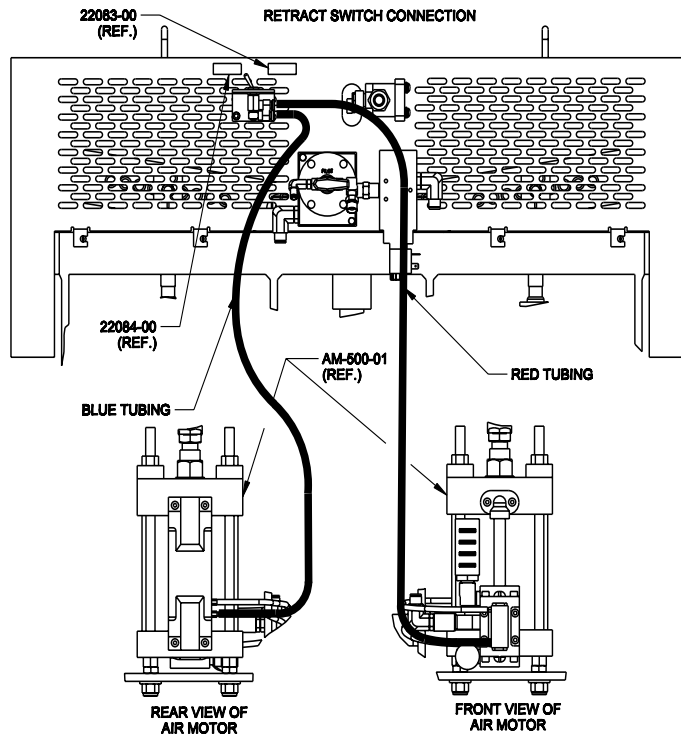
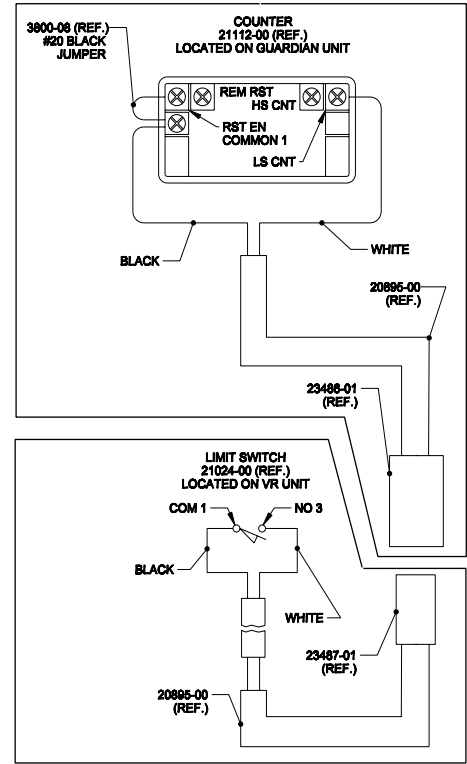
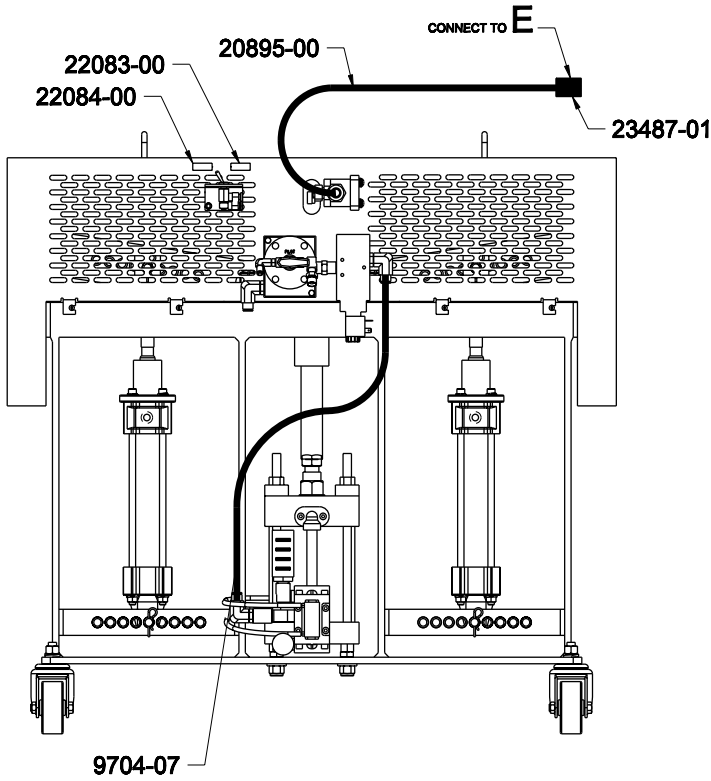
DETAIL C



Section 1 - General Information: Assembly Drawings

23860-5XX Small VR Material Pump Assembly

Sec. 1:1



Section 1 - General Information: Assembly Drawings

23860-5XX Small VR Material Pump Assembly

Sec. 1:1

Part Number	Description	Qty.
16028-01	HITCH PIN	10
18154-00	PIVOT BRACKET	2
18158-00	PUMP ADAPTER	2
1880-00	ADAPTER FITTING	1
19814-04	CLEVIS PIN	6
19814-06	CLEVIS PIN	4
20084-02	WASHER	12
20221-00	BALL VALVE	1
20291-00	V.R. FRAME	1
20292-00	GUIDE ROD&YOKE	1
20293-00	DRIVE LINK	2
20296-00	PINCH POINT DECAL	2
20368-00	SWIVEL CASTER	4
20735-01	ELBOW FITTING	1
20735-08	ELBOW FITTING	3
20895-00	CABLE	6
21007-00	MOUNTING BRACKET	1
21024-00	LIMIT SWITCH	1
21308-40C	SCREW	4
21585-01	SOLVENT VALVE	1
22042-00	LINKAGE GUARD	1
22054-00	HANDLE	2
22086-04	RETRACT SWITCH KIT	1
22312-00	VARIABLE RATIO DECAL	1
2253-02	LUBE FITTING	1
22807-00	AIR-ACTUATED VALVE	1
23487-01	ELECTRICAL PLUG	1
23861-00	CONNECTION KIT	1
4342-01	ELBOW FITTING	1
4342-04	ELBOW FITTING	2
6792-13	FITTING	1
7486-03	WASHER	2
7486-05	WASHER	4
7486-14	WASHER	4

Section 1 - General Information: Assembly Drawings

23860-5XX Small VR Material Pump Assembly

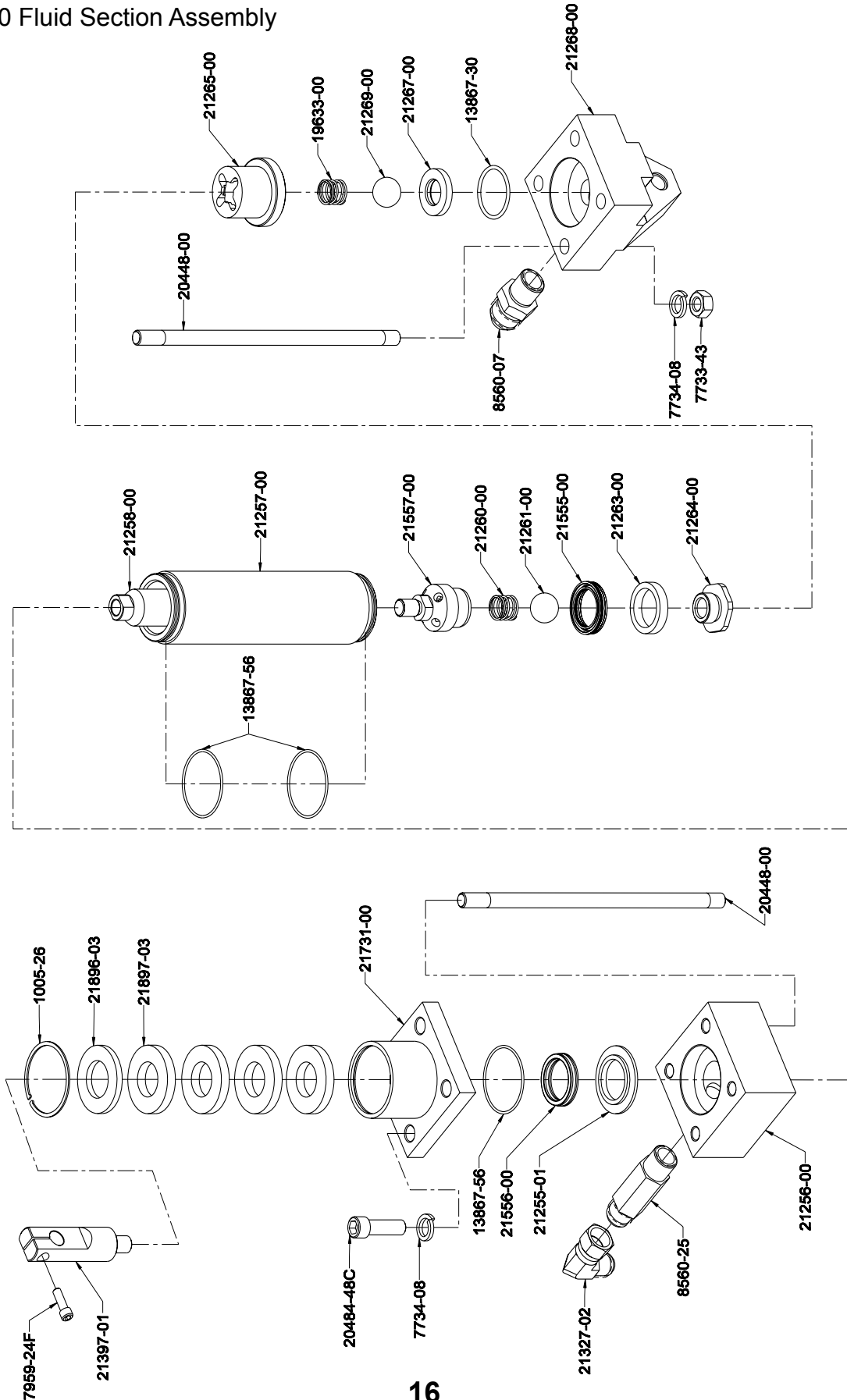
Sec. 1:1

Part Number	Description	Qty.
7729-10	HEX NUT	4
7730-12F	SCREW	4
7733-08	HEX NUT	2
7733-34	HEX NUT	4
7733-40	HEX NUT	1
7733-42	HEX NUT	4
7734-03	LOCK WASHER	8
7734-04	LOCK WASHER	6
7734-06	LOCK WASHER	6
7734-10	LOCK WASHER	4
7735-12C	SCREW	8
7783-48C	SCREW	2
7818-22	DOWEL PIN	2
7959-24F	SCREW	2
8115-03	FITTING	1
8115-04	FITTING	1
9672-12	FITTING	1
AM-500-01	AIR MOTOR	1
P33-19	EXHAUST SILENCER	2
RS-141-02	CORD GRIP	1

Section 1 - General Information: Sub Assembly Drawings

Sec. 1:1

22350-00 Fluid Section Assembly



Section 1 - General Information: Sub Assembly Drawings

22350-00 Fluid Section Parts List

Sec. 1:2

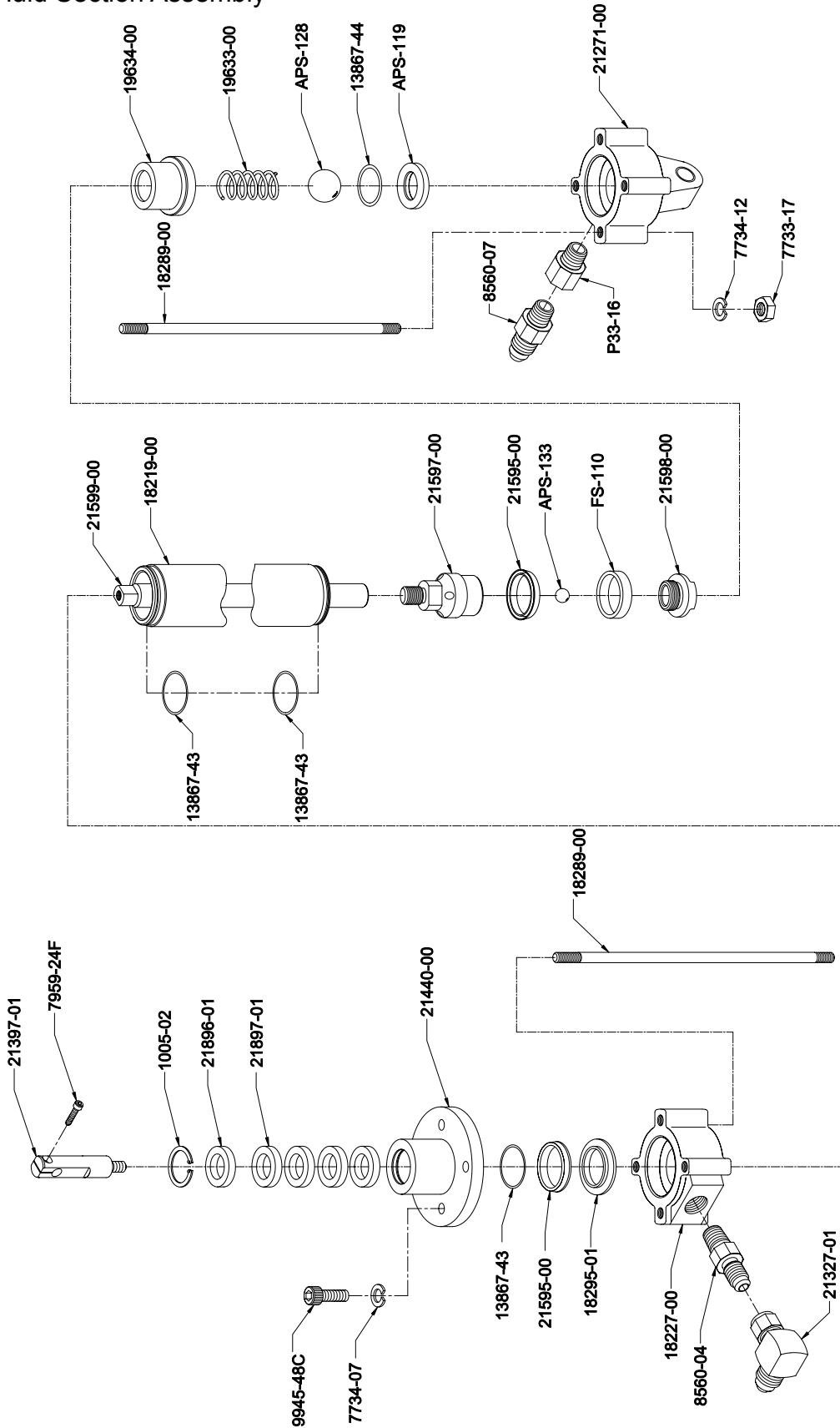
Part Number	Description	Qty.
1005-26	SNAP RING	1
13867-30	O-RING	1
13867-56	O-RING	3
19633-00	COMPRESSION SPRING	1
20448-00	TIE ROD	4
20484-48C	SCREW	4
21255-01	SUPPORT WASHER	1
21256-00	PUMP HEAD	1
21257-00	PUMP CYLINDER	1
21258-00	PUMP SHAFT	1
21260-00	SPRING	1
21261-00	SST BALL	1
21263-00	PISTON GUIDE	1
21264-00	TRANSFER HOUSING SEAT	1
21265-00	FOOT VALVE BALL HOUSING	1
21267-00	FOOT VALVE SEAT	1
21268-00	PUMP BASE	1
21269-00	FOOT VALVE BALL	1
21327-01	ELBOW FITTING	1
21397-01	SHAFT EXTENSION	1
21555-00	LOWER PUMP SEAL	1
21556-00	UPPER PUMP SEAL	1
21557-00	TRANSFER HOUSING	1
21731-00	SOLVENT CUP ADAPTER	1
21896-03	PACKING RETAINER	1
21897-03	FELT WIPER	4
7733-43	HEX NUT	4
7734-08	LOCK WASHER	8
7959-24F	SCREW	1
8560-05	FITTING	1
8560-07	FITTING	1

Repair Kit - 21277-00		
Part Number	Description	Qty.
13867-14	O-RING	2
13867-30	O-RING	1
13867-56	O-RING	3
21263-00	GUIDE	1
21555-00	LOWER PUMP SEAL	1
21556-00	UPPER PUMP SEAL	1
21897-03	FELT WIPER	4

Section 1 - General Information: Sub Assembly Drawings

Sec. 1:2

22370-00 Fluid Section Assembly



Section 1 - General Information: Sub Assembly Drawings

22370-00 Fluid Section Parts List

Sec. 1:2

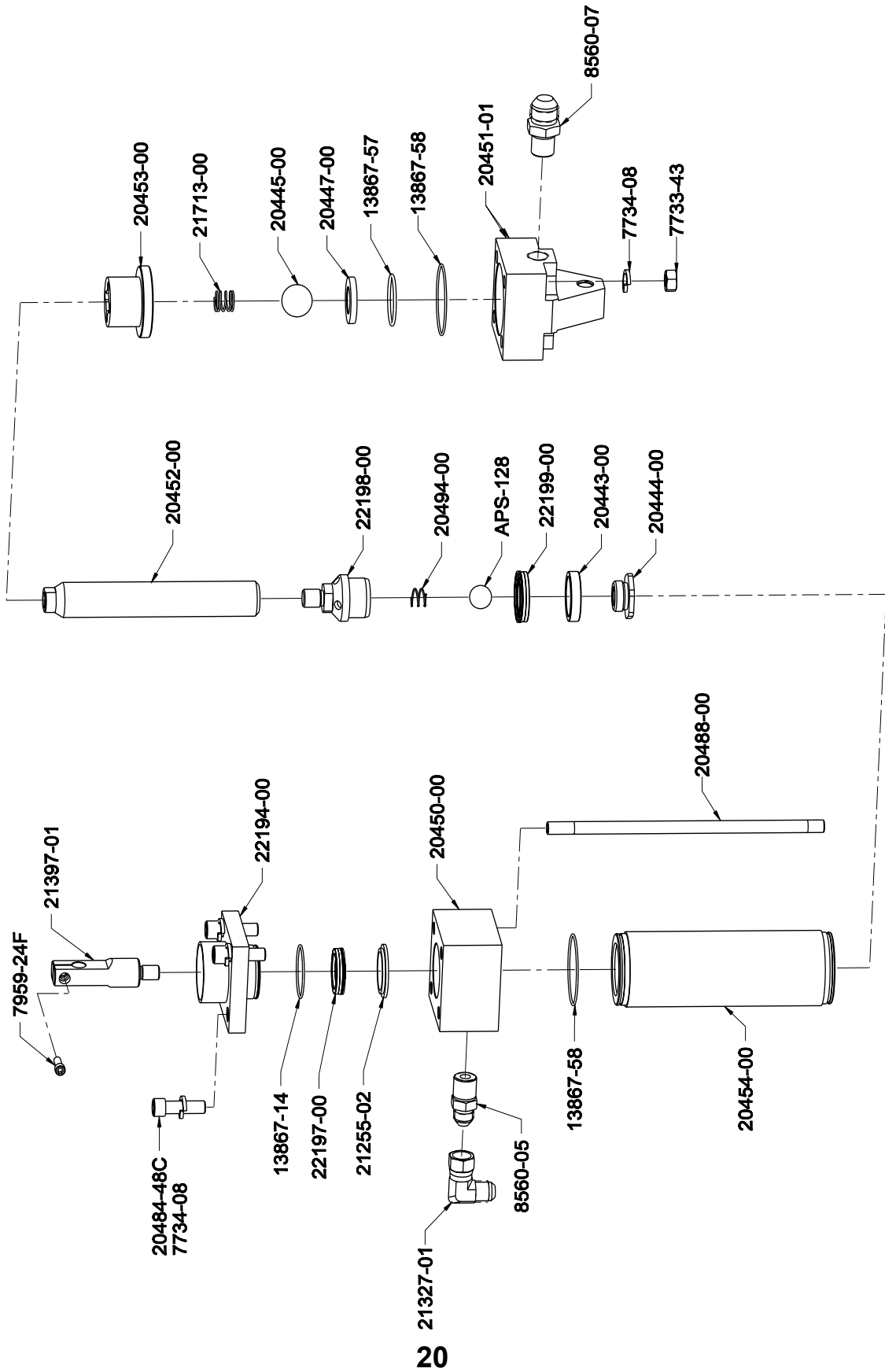
Part Number	Description	Qty.
1005-02	SNAP RING	1
13867-43	O-RING	3
13867-44	O-RING	1
18219-00	PUMP CYLINDER	1
18227-00	PUMP HEAD	1
18289-00	TIE ROD	4
18295-01	UPPER SUPPORT WASHER	1
19633-00	COMPRESSION SPRING	1
19634-00	VALVE,FOOT HOUSING	1
21271-00	PUMP BASE	1
21327-01	ELBOW FITTING	1
21397-01	SHAFT EXTENSION	1
21440-00	SOLVENT CUP ADAPTER	1
21595-00	PUMP SEAL	2
21597-00	TRANSFER HOUSING	1
21598-00	TRANSFER SEAT HOUSING	1
21599-00	PUMP SHAFT	1
21896-01	PACKING RETAINER	1
21897-01	FELT WIPER	4
7733-17	HEX NUT	4
7734-07	LOCK WASHER	4
7734-12	LOCK WASHER	4
7959-24F	SCREW	1
8560-04	FITTING	1
8560-07	FITTING	1
9945-48C	SCREW	4
APS-119	FOOT VALVE SEAT	1
APS-128	CHROME BALL	1
APS-133	SST BALL	1
FS-110	PISTON GUIDE	1
P33-16	REDUCING FITTING	1
SM-1430	PARTS LIST	1

Repair Kit - 21845-00		
Part Number	Description	Qty.
FS-110	PISTON GUIDE	1
13867-43	O-RING	3
13867-44	O-RING	1
21595-00	PUMP SEAL	2
21896-01	PACKING RETAINER	1
21897-01	FELT WIPER	4

Section 1 - General Information: Sub Assembly Drawings

Sec. 1:2

20366-01 Fluid Section Assembly



REVISION A

Section 1 - General Information: Sub Assembly Drawings

20366-01 Fluid Section Parts List

Sec. 1:2

Part Number	Description	Qty.
13867-14	O-RING	1
13867-57	O-RING	1
13867-58	O-RING	2
20443-00	PISTON GUIDE	1
20444-00	TRANSFER HOUSING SEAT	1
20445-00	FOOT VALVE BALL	1
20447-00	FOOT VALVE SEAT	1
20448-00	TIE ROD	4
20450-00	PUMP HEAD	1
20451-01	PUMP BASE	1
20452-00	PUMP SHAFT	1
20453-00	FOOT VALVE BALL HOUSING	1
20454-00	PUMP CYLINDER	1
20484-48C	SCREW	4
20494-00	SPRING	1
21255-02	UPPER SUPPORT WASHER	1
21327-01	ELBOW FITTING	1
21397-01	SHAFT EXTENSION	1
21713-00	COMPRESSION SPRING	1
22194-00	SOLVENT CUP & SEAL HOUSING	1
22197-00	UPPER PUMP SEAL	1
22198-00	TRANSFER HOUSING	1
22199-00	LOWER PUMP SEAL	1
7733-43	HEX NUT	4
7734-08	LOCK WASHER	8
7959-24F	SCREW	1
8560-05	FITTING	1
8560-07	FITTING	1
APS-128	CHROME BALL	1

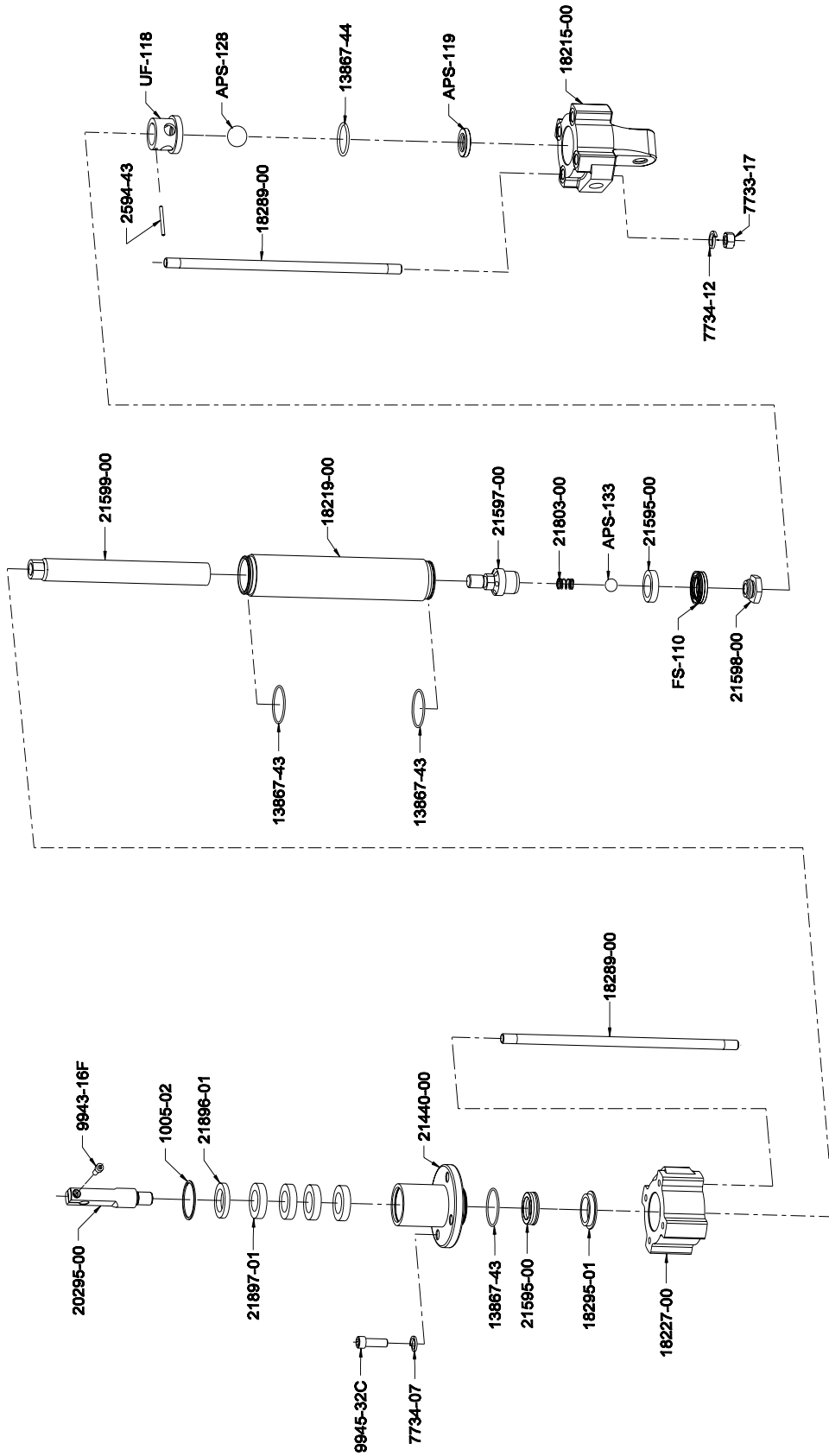
Repair Kit - 22196-00

Part Number	Description	Qty.
20443-00	PISTON GUIDE	1
13867-57	O-RING	1
13867-58	O-RING	2
22197-00	UPPER PUMP SEAL	1
22199-00	LOWER PUMP SEAL	1

Section 1 - General Information: Sub Assembly Drawings

Sec. 1:2

18175-01 Fluid Section Assembly



Section 1 - General Information: Sub Assembly Drawings

18175-01 Fluid Section Parts List

Sec. 1:2

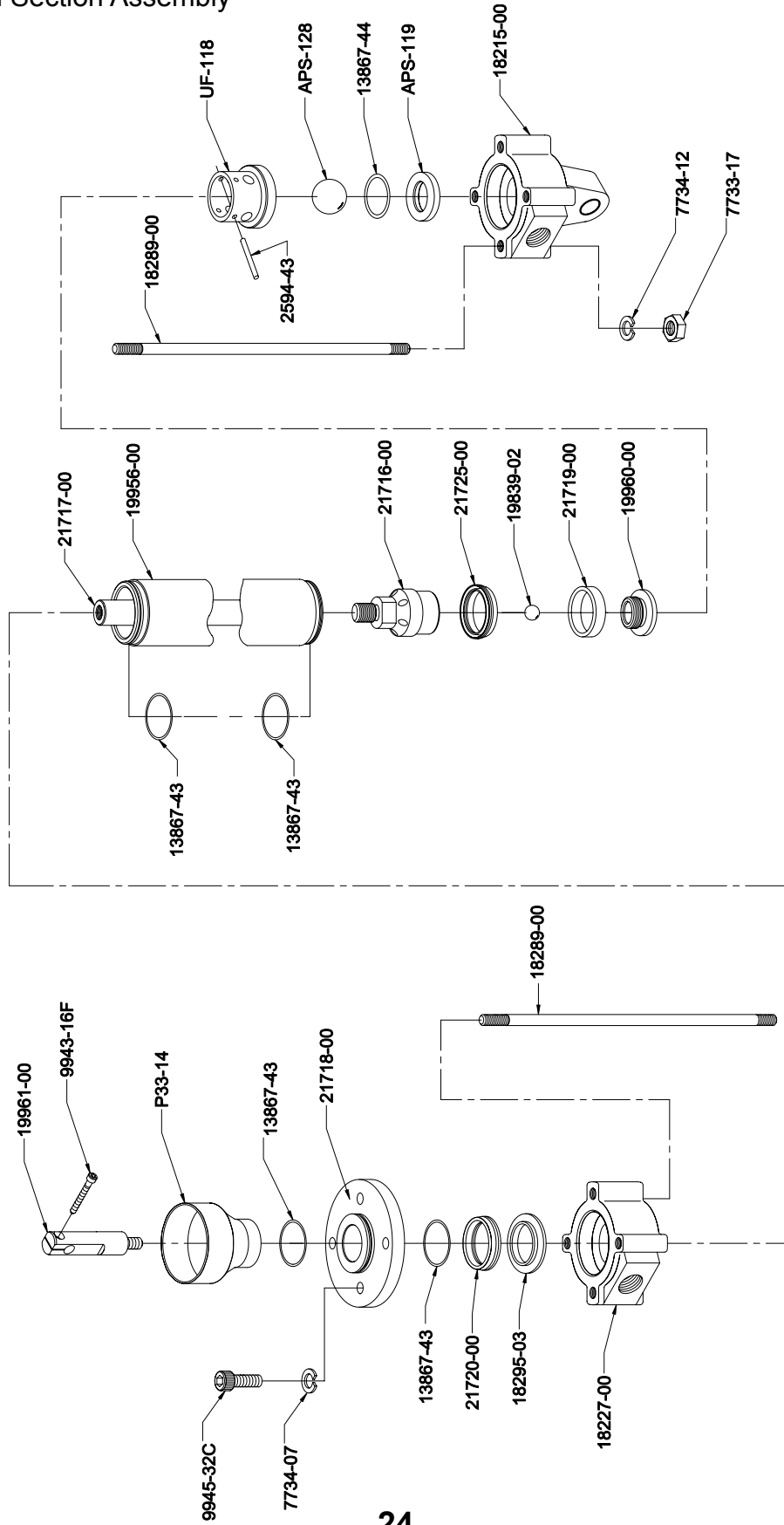
Part Number	Description	Qty.
APS-119	FOOT VALVE SEAT	1
APS-128	CHROME BALL	1
APS-133	SST BALL	1
FS-110	PISTON GUIDE	1
UF-118	FOOT VALVE HOUSING	1
1005-02	SNAP RING	1
13867-43	O-RING	3
13867-44	O-RING	1
18215-00	PUMP BASE	1
18219-00	PUMP CYLINDER	1
18227-00	PUMP HEAD	1
18289-00	TIE ROD	4
18295-01	UPPER SUPPORT WASHER	1
20295-00	SHAFT EXTENSION	1
21440-00	SOLVENT CUP ADAPTER	1
21595-00	PUMP SEAL	2
21597-00	TRANSFER HOUSING	1
21598-00	TRANSFER HOUSING SEAT	1
21599-00	PUMP SHAFT	1
21803-00	COMPRESSION SPRING	1
21896-01	PACKING RETAINER	1
21897-01	FELT WIPER	4
2594-43	ROLL PIN	1
7733-17	HEX NUT	4
7734-07	LOCK WASHER	4
7734-12	LOCK WASHER	4
9943-16F	SCREW	1
9945-32C	SCREW	4

Repair Kit - 21845-00		
Part Number	Description	Qty.
FS-110	PISTON GUIDE	1
13867-43	O-RING	3
13867-44	O-RING	1
21595-00	PUMP SEAL	2
21896-01	PACKING RETAINER	1
21897-01	FELT WIPER	4

Section 1 - General Information: Sub Assembly Drawings

Sec. 1:2

19975-01 Fluid Section Assembly



Section 1 - General Information: Sub Assembly Drawings

19975-01 Fluid Section Parts List

Sec. 1:2

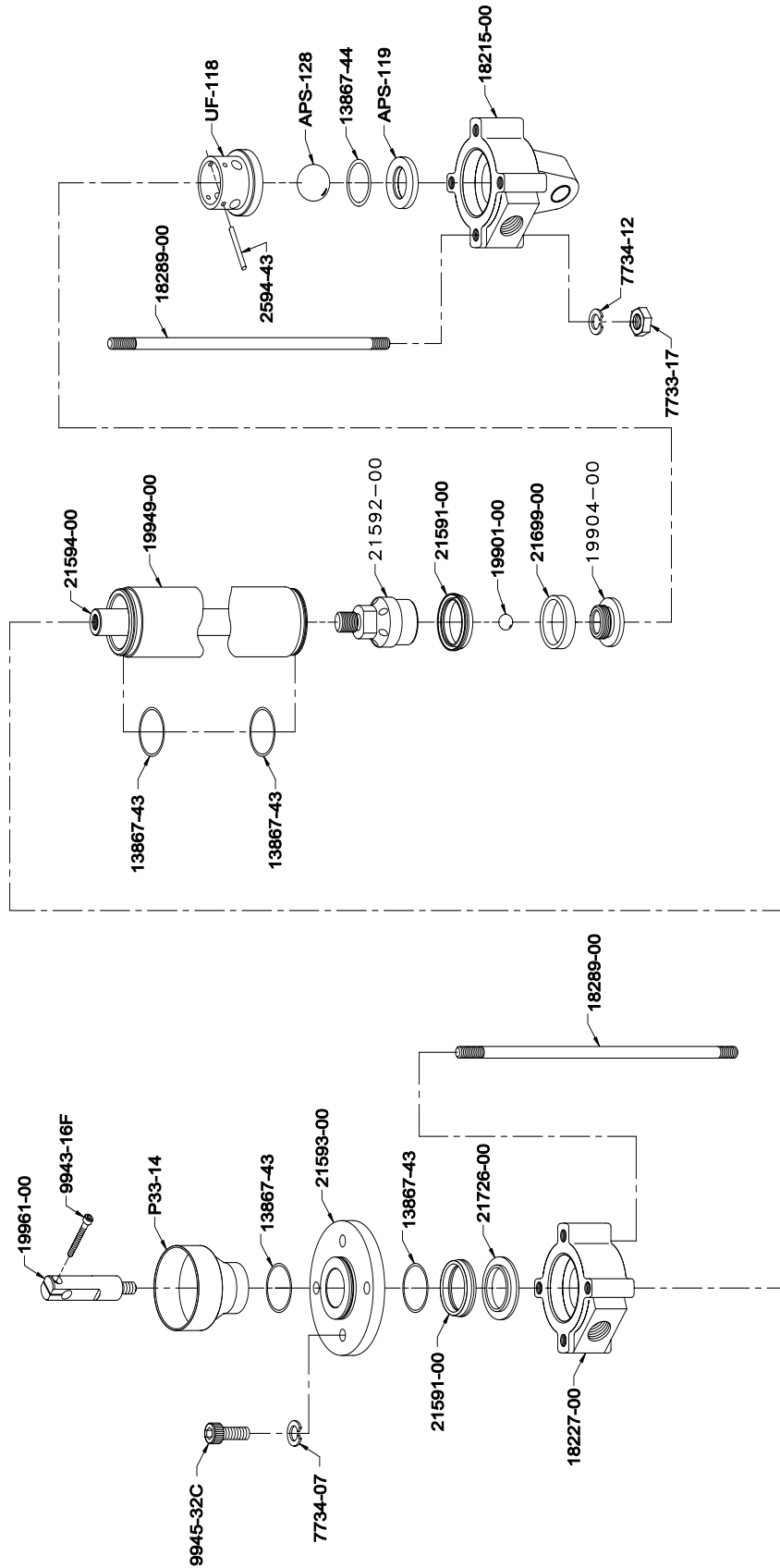
Part Number	Description	Qty.
APS-119	FOOT VALVE SEAT	1
APS-128	CHROME BALL	1
P33-14	SOLVENT CUP	1
UF-118	FOOT VALVE HOUSING	1
13867-43	O-RING	4
13867-44	O-RING	1
18215-00	PUMP BASE	1
18227-00	PUMP HEAD	1
18289-00	TIE ROD	4
18295-03	UPPER SUPPORT WASHER	1
19839-02	SST BALL	1
19956-00	PUMP CYLINDER	1
19960-00	TRANSFER HOUSING SEAT	1
19961-00	PUMP SHAFT END	1
21716-00	TRANSFER HOUSING	1
21717-00	PUMP SHAFT	1
21718-00	SOLVENT CUP ADAPTER	1
21719-00	PISTON GUIDE	1
21720-00	UPPPER PUMP SEAL	1
21725-00	LOWER PUMP SEAL	1
2594-43	ROLL PIN	1
7733-17	HEX NUT	4
7734-07	LOCK WASHER	4
7734-12	LOCK WASHER	4
9943-16F	SCREW	1
9945-32C	SCREW	4

Repair Kit - 22052-00		
Part Number	Description	Qty.
21719-00	PISTON GUIDE	1
13867-43	O-RING	4
13867-44	O-RING	1
21720-00	UPPER PUMP SEAL	1
21725-00	LOWER PUMP SEAL	1

Section 1 - General Information: Sub Assembly Drawings

Sec. 1:2

19950-01 Fluid Section Assembly



Section 1 - General Information: Sub Assembly Drawings

19950-01 Fluid Section Parts List

Sec. 1:2

Part Number	Description	Qty.
APS-119	FOOT VALVE SEAT	1
APS-128	CHROME BALL	1
P33-14	SOLVENT CUP	1
UF-118	FOOT VALVE HOUSING	1
13867-43	O-RING	4
13867-44	O-RING	1
18215-00	PUMP BASE	1
18227-00	PUMP HEAD	1
18289-00	TIE ROD	4
19901-00	SST BALL	1
19904-00	TRANSFER SEAT	1
19949-00	PUMP CYLINDER	1
19961-00	PUMP SHAFT END	1
21591-00	PUMP SEAL	2
21592-00	TRANSFER HOUSING SEAL	1
21593-00	SOLVENT CUP ADAPTER	1
21594-00	PUMP SHAFT	1
21699-00	PISTON GUIDE	1
21726-00	SUPPORT WASHER	1
2594-43	ROLL PIN	1
7733-17	HEX NUT	4
7734-07	LOCK WASHER	4
7734-12	LOCK WASHER	4
9943-16F	SCREW	1
9945-32C	SCREW	4

Repair Kit - 22053-00		
Part Number	Description	Qty.
21699-00	PISTON GUIDE	1
13867-43	O-RING	4
13867-44	O-RING	1
21591-00	PUMP SEAL	2

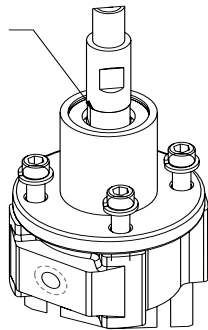
Section 1 - General Information: Maintenance

Fluid Section Maintenance & Overhaul Procedure

Daily Routine Maintenance

1. Visually inspect the system for leaks.
2. Check desiccant dryer beads to insure they are still purple and have not changed to pink.
3. Check and lube top of the fluid section.

Wipe off residual material
and add a tablespoon
of DOP,DBP



Weekly Maintenance

1. Place a small amount of grease on the air motor shaft.
2. See related manuals.

Section 2 - Technical & Warranty Information: Limited Warranty Policy

GLASCRAFT, INC. (“GlasCraft”) warrants to the original Purchaser of GlasCraft manufactured equipment and parts, that all GlasCraft manufactured equipment and parts will conform to their published written specifications and be free of defects in workmanship and material for a period of one (1) year from the original date of installation. GlasCraft makes no warranty to anyone other than the original Purchaser.

If any GlasCraft manufactured part or equipment is found to be defective in workmanship or material within the one-year period from the date of installation, as determined solely by GlasCraft, GlasCraft, in its sole discretion, will either repair or replace the defective part or equipment at GlasCraft’s cost, including freight charges both ways, or credit or refund the purchase price for the defective equipment or part.

A warranty claim will be honored only when:

1. GlasCraft has been informed, in writing, of any such defect in workmanship or material within ten (10) days after discovery by the original Purchaser;
2. An official of GlasCraft has issued a return authorization number; and
3. The claimed defective equipment or part has been returned to GlasCraft by the original Purchaser, freight prepaid (with proper return authorization number(s) attached), to: GlasCraft, Inc., 5845 West 82nd Street, Suite 102, Indianapolis, IN 46278, U.S.A.

This warranty shall not apply to any equipment or parts that have been altered or repaired by anyone other than GlasCraft or to defects or damage resulting from improper installation, misuse, negligence, accident, or use not specified by GlasCraft. This warranty shall not apply to any equipment where any parts or components were replaced by any parts or components not manufactured or supplied by GlasCraft. The decision by GlasCraft shall be conclusive and binding on Purchaser.

GlasCraft does not warrant that any equipment or parts sold to Purchaser meet or comply with any local, state, federal, or other jurisdiction’s regulations or codes. GlasCraft does not warrant that any equipment or part sold to Purchaser, when used individually or in concert with any other part, equipment, device, component or process, does not infringe on any patent rights of any third party. GlasCraft only warrants that it has no specific knowledge of any such infringement.

GlasCraft makes no warranty as to any parts or equipment manufactured by others. Purchaser shall look solely and only to the manufacturer of such parts or equipment with respect to any warranty claims. GlasCraft hereby assigns to Purchaser the original manufacturer’s warranties to all such equipment and parts, to the full extent permitted.

THE AFORESAID WARRANTY IS IN LIEU OF ALL OTHER WARRANTIES, EXPRESS OR IMPLIED. SPECIFICALLY THERE ARE NO WARRANTIES OF MERCHANTABILITY OR FITNESS FOR A PARTICULAR PURPOSE, WHICH WARRANTIES ARE SPECIFICALLY DISCLAIMED.

GlasCraft shall not be liable for any loss or expense resulting from damage or accidents caused by improper use or application of materials manufactured or sold by GlasCraft or its distributors or agents.

UNDER NO CIRCUMSTANCES SHALL GLASCRAFT’S LIABILITY EXCEED THE AMOUNT PURCHASER PAID FOR THE CLAIMED DEFECTIVE EQUIPMENT OR PART. UNDER NO CIRCUMSTANCES SHALL GLASCRAFT BE LIABLE FOR INCIDENTAL OR CONSEQUENTIAL DAMAGES OR FOR LOST PROFITS.

No action arising from or relating to any goods manufactured by or purchased from GlasCraft may be brought more than one (1) year after the cause of action accrues.

Section 2 - Technical & Warranty Information: Technical Assistance.....

Sec. 2:3

Thank You for selecting GlasCraft spray equipment

Should you have any questions or need technical assistance, contact your factory authorized GlasCraft distributor.

Distributor: _____

Phone: _____

Contact: _____

For any issues your distributor cannot address, the GlasCraft technical service department is always available to assist you with the operation of your spray equipment. To help our technical representatives expedite your call and better address your questions, please have the following information ready and available when you phone GlasCraft.

*** If your questions are not urgent, You can e-mail all correspondence to service@glascraft.com**

Model: _____

Spray gun: _____

Serial number: _____

Material pump: _____

Serial number: _____

Catalyst pump: _____

Chopper: _____

Serial number: _____

Type of material: _____

Type of catalyst: _____

Catalyst percentage: _____

Air compressor size: _____

Compressor to system supply line: _____

Pressure at the system: _____

Main air line volume: _____

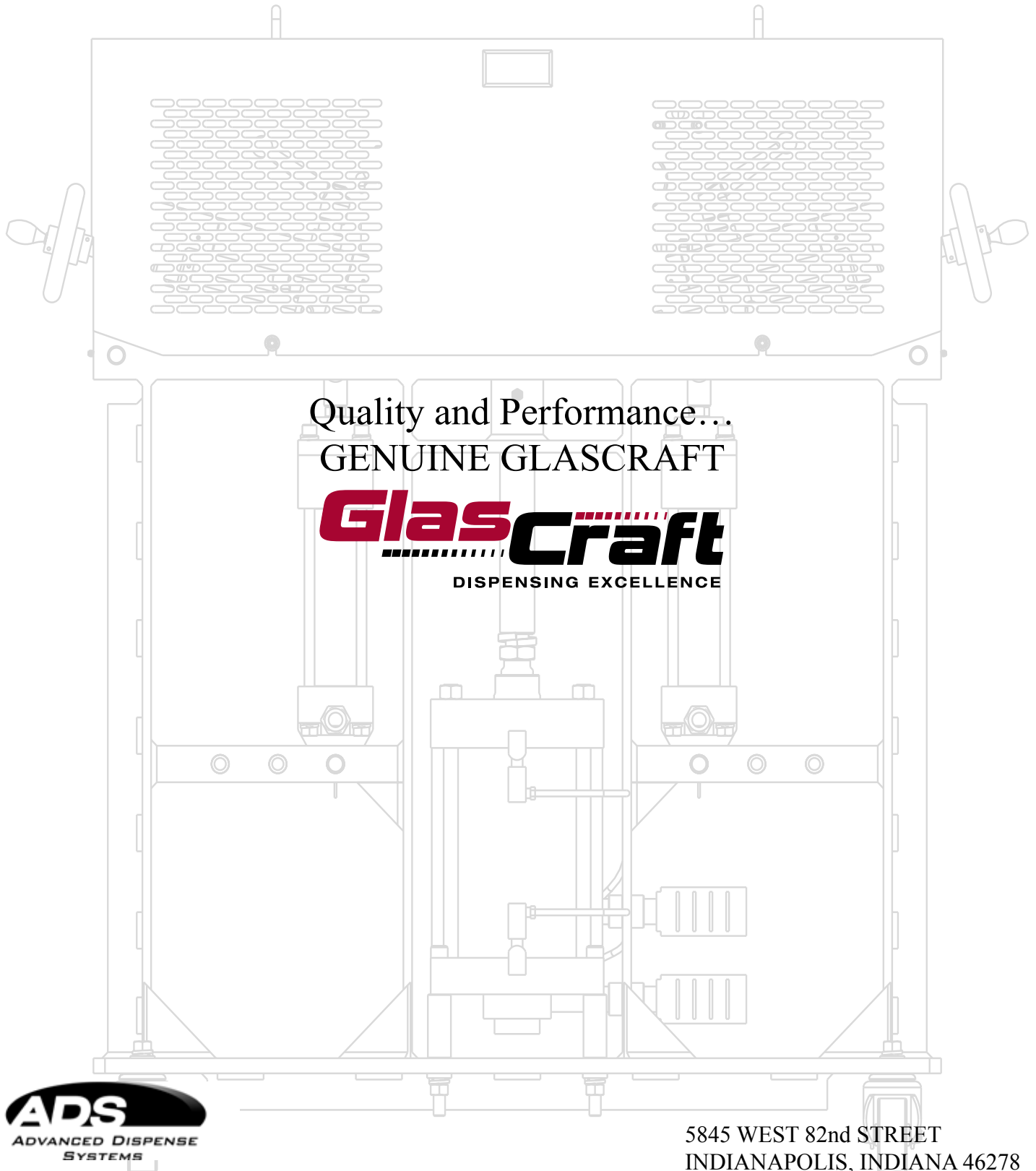
System gauge pressures

AAC pressure: _____

Atomizing air pressure: _____
(external mix)

Material pump pressure: _____

Solvent flush pressure: _____



Quality and Performance...

GENUINE GLASCRAFT

GlasCraft

DISPENSING EXCELLENCE

5845 WEST 82nd STREET
INDIANAPOLIS, INDIANA 46278
U.S.A.

www.glascraft.com

SM-1431
REVISION March 2008

Phone (317) 875-5592
Fax (317) 875-5456
E-Mail sales@glascraft.com