

Probler P2 Elite with Optional Chopper Attachment

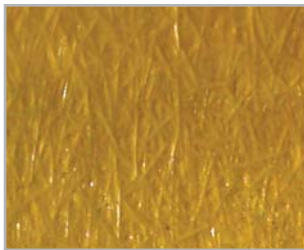
Probler P2 Elite

The Probler p2 Elite from GlasCraft offers a degree of operational flexibility unmatched by any other plural component dispense gun. When glass fiber is required for structural strength or rigidity, a fiberglass cutter can be mounted to the Probler P2 Elite. This allows for fiber at selected lengths and volume fractions (percentages) to be dispersed into the polyurea coating as it is being sprayed onto the target area.



Applications

This process is usually used to manufacturer non-structural aesthetic pieces with thin walls (e.g. bath tubs, shower trays, agricultural items and earth moving machinery parts), but it is also used in newer applications where reinforcement of flooring applications is required for high-traffic areas.



Improved robustness of the finished part is always the goal for such applications, and the Probler P2 Elite from GlasCraft utilizes either the B-410 or B-510 chopper to facilitate application of glass fiber into a sprayed material. The resulting matrix is shown here.

Part	P/N	Notes
Probler P2 Elite Spray Guns	23940-AA	0.036" (0.9mm) Round Spray Nozzle
	23940-00	0.051" (1.3mm) Round Spray Nozzle
	23940-01	0.059" (1.5mm) Round Spray Nozzle
	23940-02	0.073" (1.9mm) Round Spray Nozzle
	23940-03	0.088" (2.2mm) Round Spray Nozzle
	23940-04	0.100" (2.5mm) Round Spray Nozzle
	23940-05	0.125" (3.2mm) Round Spray Nozzle
P2 Elite Conversion kit	23941-00	Kit contains all parts needed to convert existing 23950-XX Probler P2 guns into 23940-XX Probler P2 Elite guns
P2 Elite Chopper kit w/ B-410 chopper	23942-01	Kit contains all parts and chopper needed to use 23940-XX Probler P2 Elite guns with B-410 Chopper
P2 Elite Chopper kit w/ B-510 chopper	23942-02	Kit contains all parts and chopper needed to use 23940-XX Probler P2 Elite guns with B-510 Chopper

Features

- Specialty Probler P2 dispense gun – spray or pour
- Output ranges from 4 lbs / minute up to 40 lbs / minute (2kg to 18kg / minute)
- Adjustable length of the fiber strand
- The volume of fiber is adjustable (as a percentage compared to the polyurea being dispersed)
- Flexibility from wide to narrow spray pattern
- Uniform, even distribution of fiber across the width of spray pattern
- Excellent wetting & encapsulating of fiber in the polyurea
- Maximum mixing pressure of 3000 psi
- Can be used with any GlasCraft Guardian Proportioner
- Patent protected technology

Chopper Dimensions & Weight

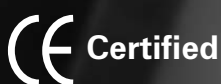
Chopper Model Number	Depth	Length	Height	Weight
B-510 with chute	5.5" 14 cm	7.5" 19 cm	3.8" 9.7 cm	3.47 lbs 1.6 kg
B-410 with chute	5.3" 13.5 cm	6.8" 17.3 cm	3.7" 9.4 cm	3.14 lbs 1.4 kg

Fiber length capabilities with each chopper

	4 Blades	8 Blades	16 Blades	32 Blades
B-510 roving length	1.08" 27.4 mm	0.54" 13.7 mm		
B-410 roving length	1.08" 27.4 mm	0.54" 13.7 mm	0.27" 6.9 mm	0.135" 3.4 mm



Probler P2 with B-410 chopper attachment



> **GLASCRAFT INC.**
5845 WEST 82nd STREET
INDIANAPOLIS, INDIANA 46278 U.S.A.
Phone 317-875-5592 Fax 317-875-5456
E-Mail sales@glascraft.com